



RIDER NOTICE

April 28, 2014

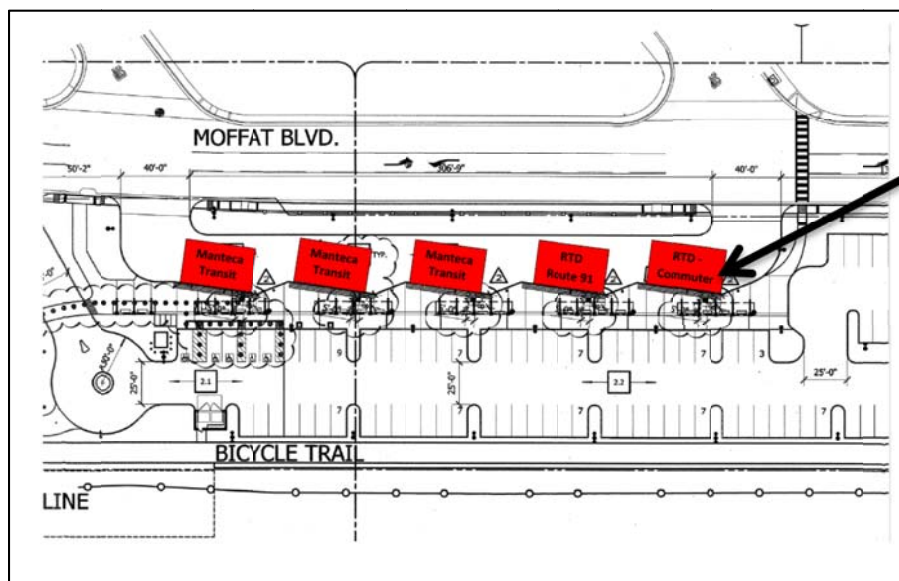
ROUTE 150 - ADDITIONAL STOP AT MANTECA TRANSIT STATION

RTD will begin using the Manteca Transit Station for RTD-BART Commuter Route 150 effective Thursday, May 1, 2014. Route 150 will stop in the last bay, adjacent to the parking lot (see map below). Parking is free at this location. Fares will be the same rate as the Main Street/ Walmart Park and Ride.

Manteca to BART Manteca Transit Station	BART to Manteca Manteca Transit Station
5:00am	4:40pm
6:00am	5:40pm
8:10am	8:00pm

RTD will continue to stop at the Main Street/Walmart Park and Ride. Evening drop-offs will be located at the RTD/Manteca Transit bus stop on northbound Main Street at Industrial Park Drive.

We appreciate your support as we work to improve RTD's Commuter Services. If you have any questions, please contact Commuter Services at (209) 943-1111. Thank you for choosing to ride RTD.



Route 150 Stop

- Image provided by City of Manteca